



PROTEIN METRICS

# Software End-User License Manual

October 2021

Protein Metrics Inc., Cupertino, California, USA

## Contents

Protein Metrics End User License Manual .....	2
Introduction .....	2
Types of Licenses .....	2
Types of Operations .....	2
Activate a License.....	2
Online activation .....	2
Offline activation .....	5
Return a License.....	8
Online return .....	8
Offline return.....	9
View License Information.....	12
Move license to another machine (Rehost) .....	13
Tips .....	13
Follow offline request-response order .....	13
Load offline response once .....	13
Do not edit the Shared-Seat license tab.....	13
Contact Protein Metrics .....	13

# Protein Metrics End User License Manual

## Introduction

This manual explains to the end user how to activate a license for Protein Metrics applications. It also describes other license-related operations, including returning, viewing, and rehosting a license.

## Types of Licenses

**Protein Metrics applications employ three types of licenses. A local license server (LLS) license is hosted on a local server. LLS licenses are part of a pool of floating licenses that are managed by the server and are not installed on individual machines.** An activation ID for an LLS license begins with the string “s-“. **For details about this type of license, see the PMI Local License Server Manual.** **The other two types of license are Node-locked licenses.** This manual focuses on these licenses. Node-locked licenses are tied to specific machines and may also be tied to individual user logins.

The two types of node-locked licenses are:

- **Individual:** An individual-based license is limited to one user on a specific machine. This is also called ‘named user’ license as it restricts the use of the software to the user who activated it. Any other user logging into the same machine would not be able to use the software. An activation ID for an individual-based license does not begin with the string “m-“ or “s-“.
- **Machine:** A machine-based license allows all users who can login to the machine to use the software. No restriction can be placed on who can or cannot use the software. Individual machine-based licenses can be returned and re-hosted to a different machine as needed. A machine license requires administrative privileges to be activated. An activation ID for a machine-based license begins with the string “m-“.

## Types of Operations

There are several operations that an end user can do with a license:

- **Activation:** enables specific applications in the software suite. Activations can be done online or offline.
- **Return:** allows return of a license back to Protein Metrics. Returns can be done online or offline.
- **Rehost:** after a license is returned, that license can be activated on another machine.
- **View:** provides detailed information about all licenses registered to a given PMI software installation.

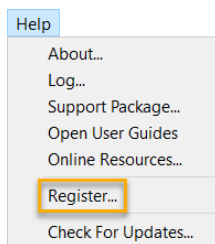
## Activate a License

A license can be activated online or offline.

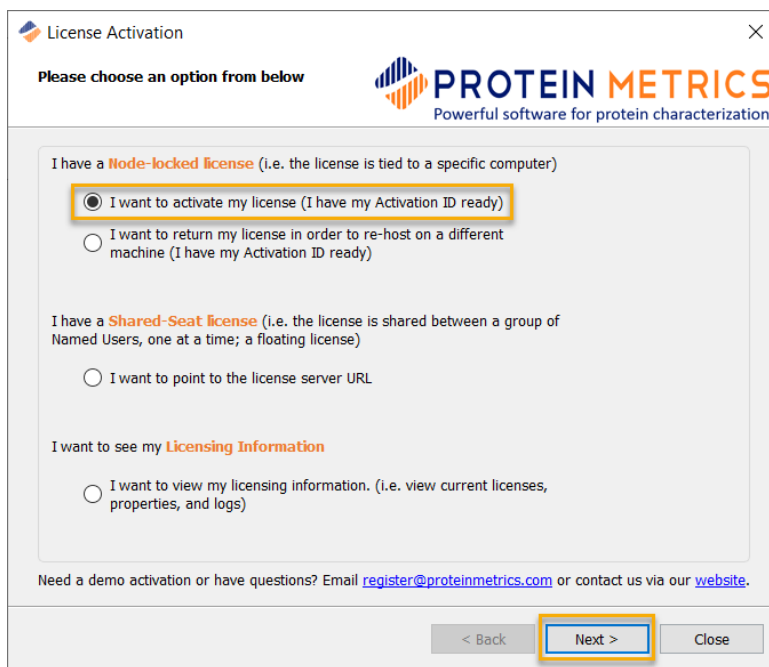
### Online activation

The simplest form of license activation is online. This can usually be done in minutes using an activation ID. To activate a license online:

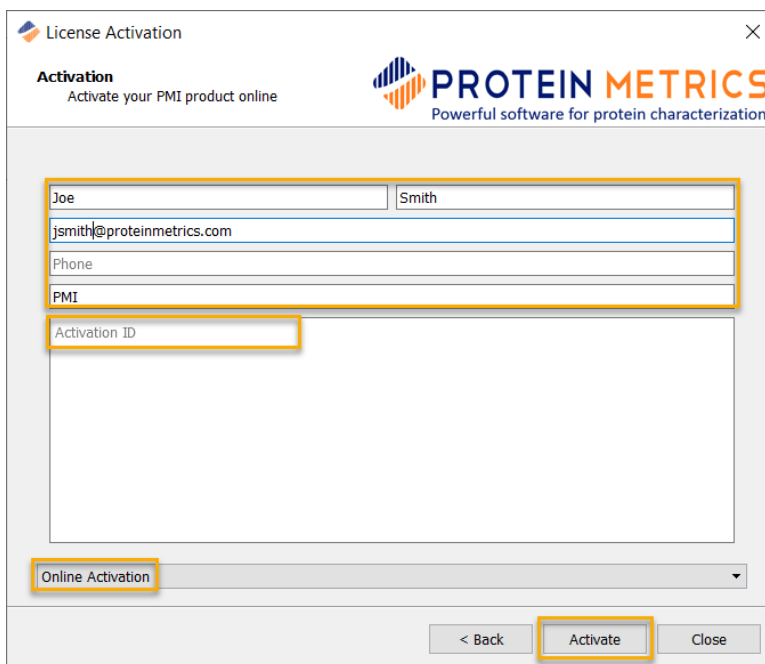
1. Click the **Help > Register** menu on the toolbar.



2. In the License Activation dialog, select **I want to activate my license**. Click **Next**.



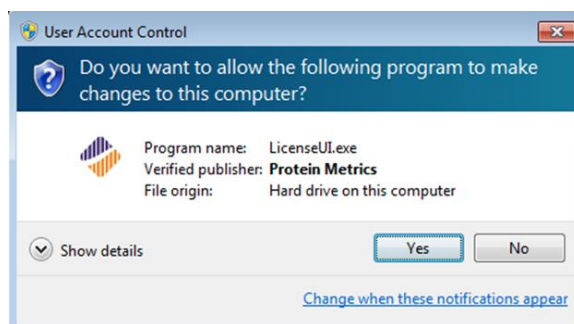
3. Complete the form and enter the Activation ID. Make sure **Online Activation** is selected at the bottom of the page. Click **Activate** to complete the online activation. An individual-based license (which does not begin with “m-“ or “s-“) should activate immediately.



The License Activation dialog box contains the following fields and controls:

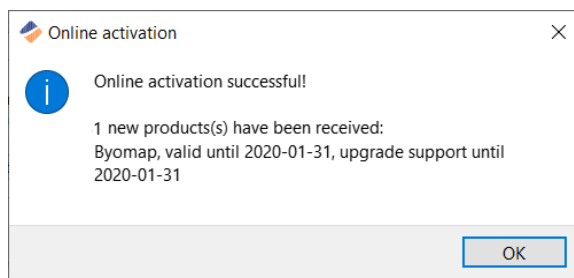
- Fields for Name (Joe) and Surname (Smith)
- Field for Email (jsmith@proteinmetrics.com)
- Field for Phone
- Field for PMI
- Field for Activation ID
- A dropdown menu currently set to "Online Activation"
- Buttons for "< Back", "Activate", and "Close"

- To activate a machine-based license, accept the User Account Control (UAC) permission.




A machine-based license (which begins with "m-") allows multiple users on a single computer to share one activation license. Additionally, the user needs to have administrator privileges on the machine to complete the activation.

- The activation process may take a few moments. A message displays if the activation is successful.



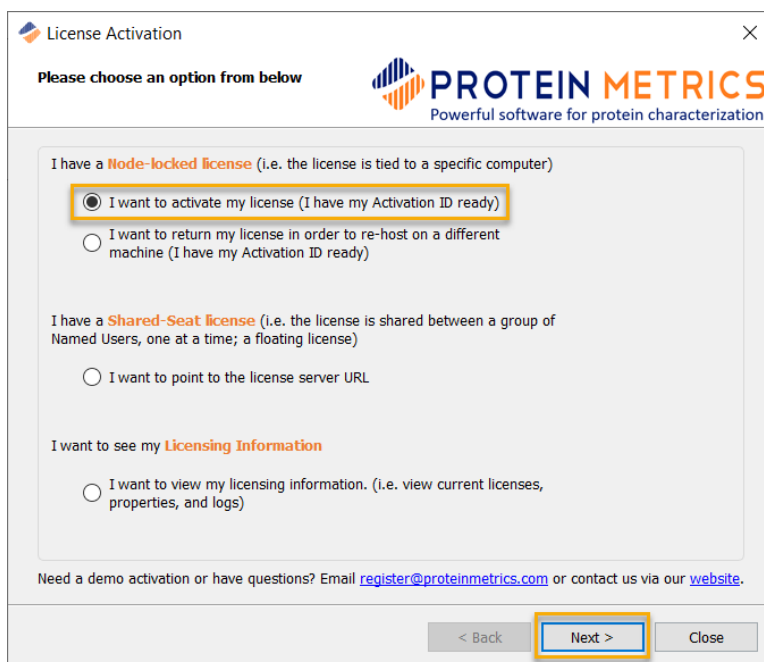
- If the activation is successful, the title on the top of the application window will be updated with the registered version and the number of days left on that license.

 PMI-Byos - Protein Metrics Inc. - Registered (v3.6-0 x64) - Days left: 86.5

7. If the activation is unsuccessful, an error message will appear. Please take a screenshot and contact [support@proteinmetrics.com](mailto:support@proteinmetrics.com) for help.

Sometimes a user cannot or chooses not to connect the host machine to the Internet. In this case, the software can be activated offline. To activate a license offline:

1. Click the **Help > Register** menu on the toolbar.
2. In the License Activation dialog, select **I want to activate my license**. Click **Next**.

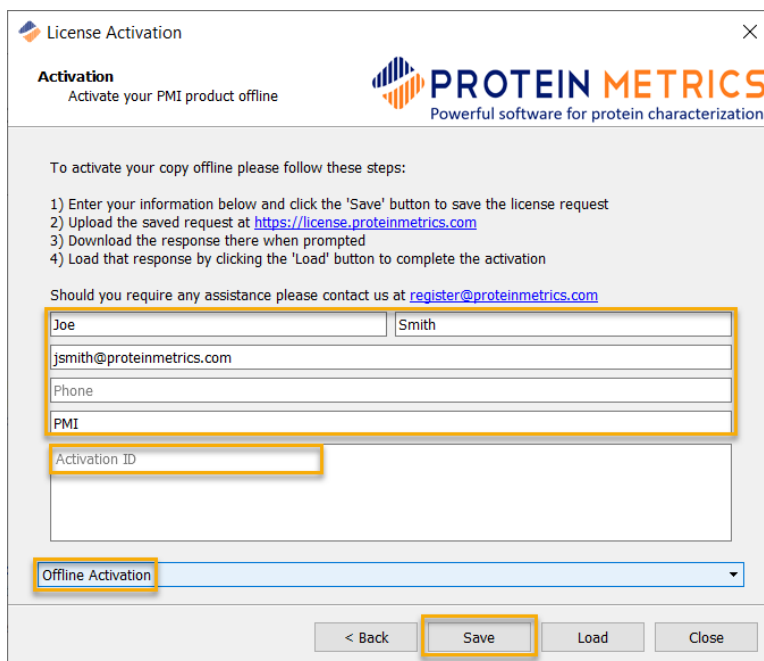


The image shows a 'License Activation' dialog box with the Protein Metrics logo and tagline 'Powerful software for protein characterization'. The dialog prompts the user to 'Please choose an option from below'. There are three main sections of options:

- I have a Node-locked license (i.e. the license is tied to a specific computer)**
  - I want to activate my license (I have my Activation ID ready)
  - I want to return my license in order to re-host on a different machine (I have my Activation ID ready)
- I have a Shared-Seat license (i.e. the license is shared between a group of Named Users, one at a time; a floating license)**
  - I want to point to the license server URL
- I want to see my Licensing Information**
  - I want to view my licensing information. (i.e. view current licenses, properties, and logs)

At the bottom, there is a note: 'Need a demo activation or have questions? Email [register@proteinmetrics.com](mailto:register@proteinmetrics.com) or contact us via our [website](#).' Below this are three buttons: '< Back', 'Next >', and 'Close'. The 'Next >' button is highlighted with a yellow box.

3. At the bottom of the Activation dialog, change **Online Activation** to **Offline Activation**. Complete the form, enter the Activation ID and click **Save**.



**License Activation**

**Activation**  
Activate your PMI product offline

**PROTEIN METRICS**  
Powerful software for protein characterization

To activate your copy offline please follow these steps:

- 1) Enter your information below and click the 'Save' button to save the license request
- 2) Upload the saved request at <https://license.proteinmetrics.com>
- 3) Download the response there when prompted
- 4) Load that response by clicking the 'Load' button to complete the activation

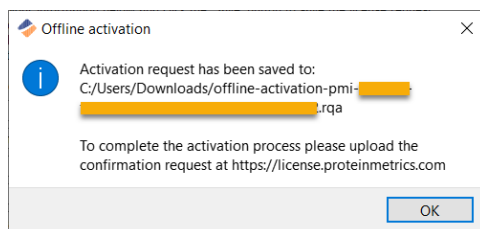
Should you require any assistance please contact us at [register@proteinmetrics.com](mailto:register@proteinmetrics.com)

Joe Smith  
 jsmith@proteinmetrics.com  
 Phone  
 PMI  
 Activation ID

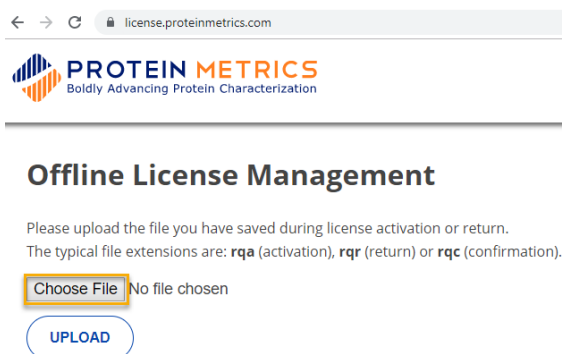
Offline Activation

< Back Save Load Close

4. If a request file is successfully generated, a window appears giving the path and file name of the request file ( \*.rqa ):



5. Copy the saved request file to a second computer that is connected to the Internet. Go to the URL <https://license.proteinmetrics.com/>. Click **Choose File**, navigate to the copy of the request file, and click **Open**. The rqa file is displayed in the web browser. Click **UPLOAD**.



6. If successful, a link to download the response file ( \*.rqa.bin ) is displayed. Click the link to save the file locally.



## Offline License Management

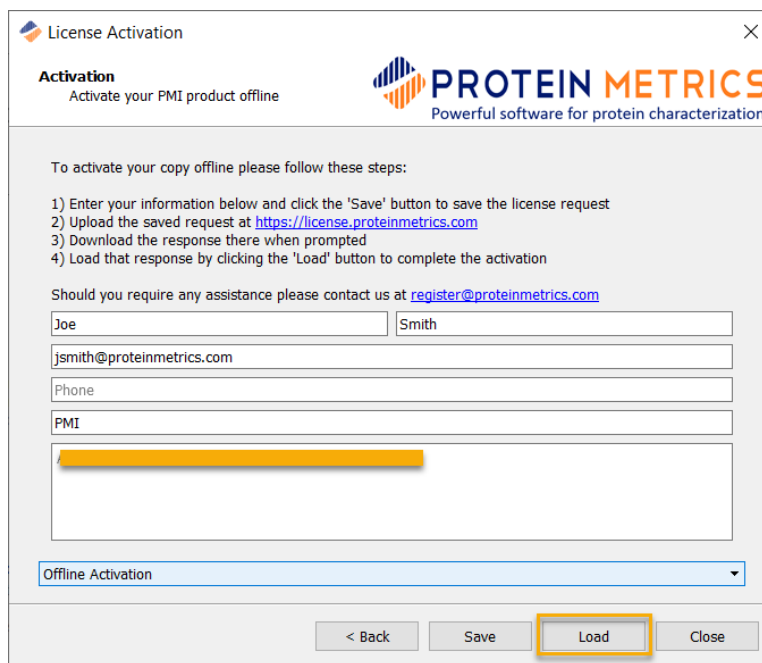
The request has been processed successfully

To complete the process please:

1. Download [offline-activation-m-term1y-bygmy-!\[\]\(750841ae7100dc832cb0a4b3af4492f3\_img.jpg\).rqa.bin](#)
2. Load it in License Dialog

[<< BACK TO FILE UPLOADING](#)

7. Copy the saved response file to the offline computer where the PMI software will be activated. To load the response file, return to the License Activation dialog and click **Load**:



License Activation


**Activation**  
Activate your PMI product offline

**PROTEIN METRICS**  
Powerful software for protein characterization

To activate your copy offline please follow these steps:

- 1) Enter your information below and click the 'Save' button to save the license request
- 2) Upload the saved request at <https://license.proteinmetrics.com>
- 3) Download the response there when prompted
- 4) Load that response by clicking the 'Load' button to complete the activation

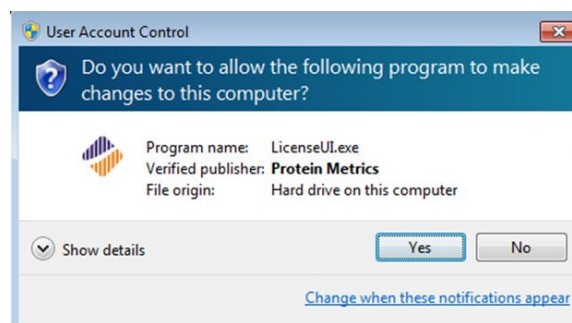
Should you require any assistance please contact us at [register@proteinmetrics.com](mailto:register@proteinmetrics.com)

Joe Smith  
jsmith@proteinmetrics.com  
Phone  
PMI  


Offline Activation

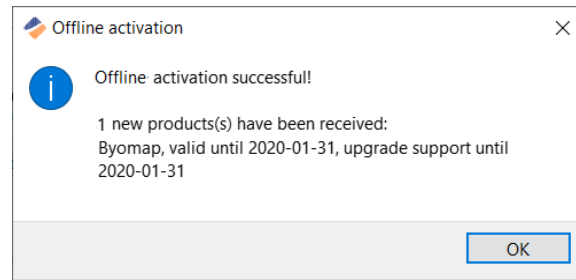
< Back Save **Load** Close

8. Navigate to the response file ( \*.rqa.bin ) and click **Open**. To activate a machine-based license, accept the User Account Control (UAC) permission.

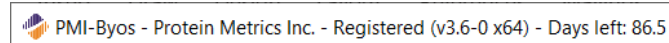


9. A summary message is displayed to provide the outcome of the activation process:





10. If the activation is successful, the title on the top of the application window will be updated with the registered version and the number of days left on that license.



11. If unsuccessful, an error message will display. Please contact [support@proteinmetrics.com](mailto:support@proteinmetrics.com) for help.

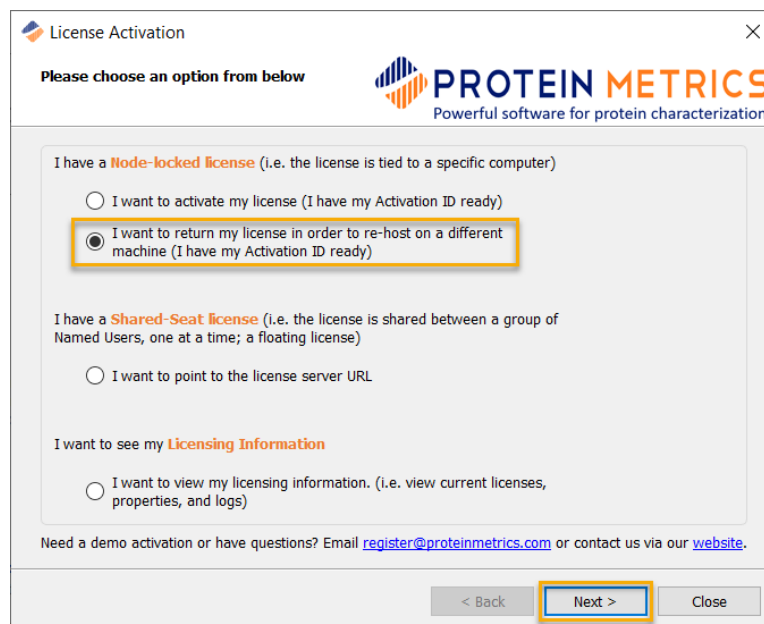
## Return a License

Sometimes a license activation ID needs to be returned. For example, an activation ID must be returned to move a license from one computer to another. An activation ID can be returned using online or offline procedures.

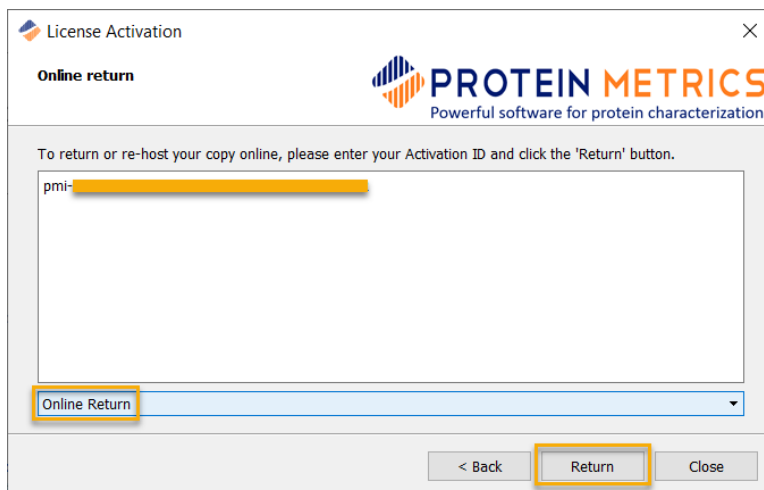
### Online return

To return a license online:

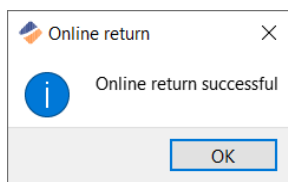
1. Click the **Help > Register** menu on the toolbar.
2. In the License Activation dialog, select **I want to return my license**. Click **Next**.



3. Be sure that Online Return is selected at the bottom. Enter the activation ID and click **Return**.



4. The return process may take a few moments. A message displays if the return is successful.

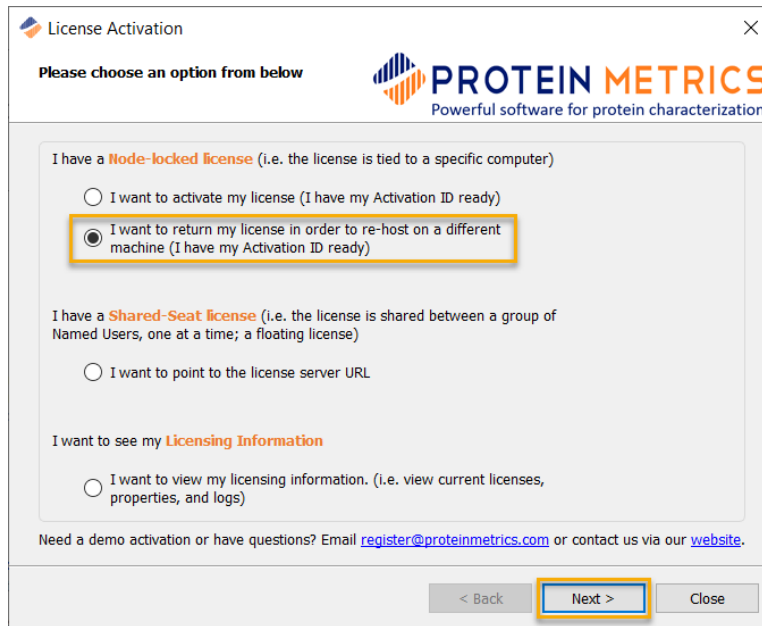


5. If the return is unsuccessful, please contact [support@proteinmetrics.com](mailto:support@proteinmetrics.com) for help.

## Offline return

To return a license offline:

1. Click the **Help > Register** menu on the toolbar.
2. In the License Activation dialog, select **I want to return my license**. Click **Next**.



License Activation

Please choose an option from below

**PROTEIN METRICS**  
Powerful software for protein characterization

I have a **Node-locked license** (i.e. the license is tied to a specific computer)

I want to activate my license (I have my Activation ID ready)

I want to return my license in order to re-host on a different machine (I have my Activation ID ready)

I have a **Shared-Seat license** (i.e. the license is shared between a group of Named Users, one at a time; a floating license)

I want to point to the license server URL

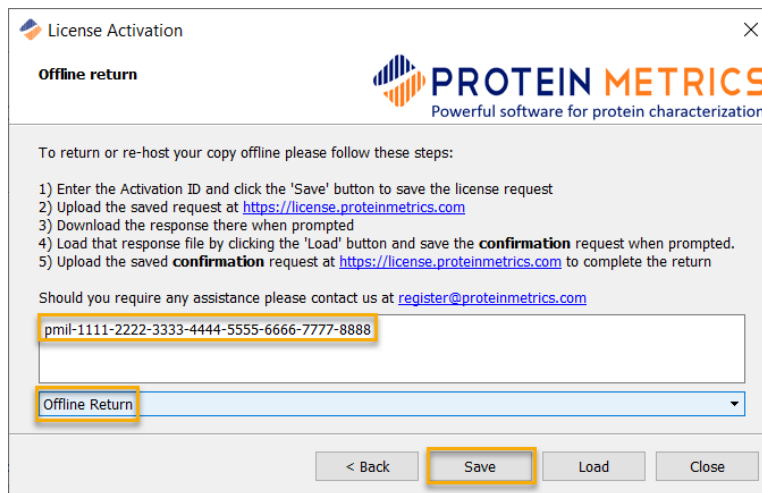
I want to see my **Licensing Information**

I want to view my licensing information. (i.e. view current licenses, properties, and logs)

Need a demo activation or have questions? Email [register@proteinmetrics.com](mailto:register@proteinmetrics.com) or contact us via our [website](#).

< Back   **Next >**   Close

- At the bottom of the Activation dialog, change **Online Return** to **Offline Return**. Enter the Activation ID and click **Save**.



License Activation

**Offline return**

**PROTEIN METRICS**  
Powerful software for protein characterization

To return or re-host your copy offline please follow these steps:

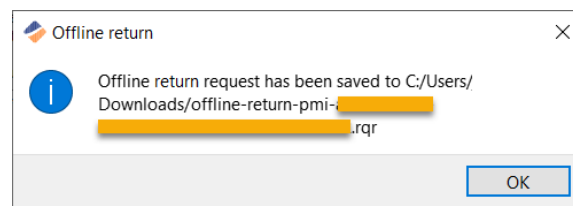
- 1) Enter the Activation ID and click the 'Save' button to save the license request
- 2) Upload the saved request at <https://license.proteinmetrics.com>
- 3) Download the response there when prompted
- 4) Load that response file by clicking the 'Load' button and save the **confirmation** request when prompted.
- 5) Upload the saved **confirmation** request at <https://license.proteinmetrics.com> to complete the return

Should you require any assistance please contact us at [register@proteinmetrics.com](mailto:register@proteinmetrics.com)

Offline Return

< Back   **Save**   Load   Close

- A message displays if the return request file ( \*.rqf ) is successfully saved.

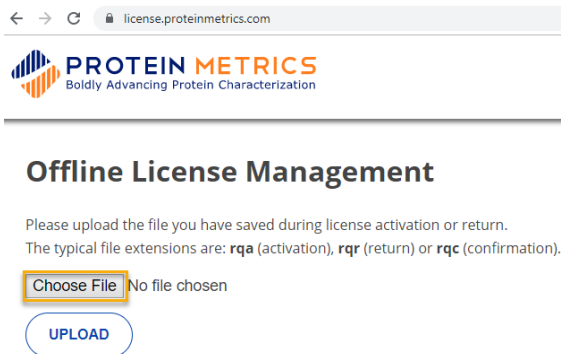


Offline return

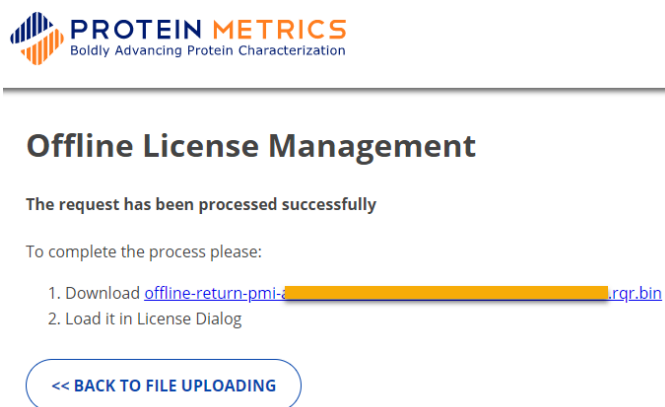
Offline return request has been saved to C:/Users/  
Downloads/offline-return-pmi-  
.rqf

OK

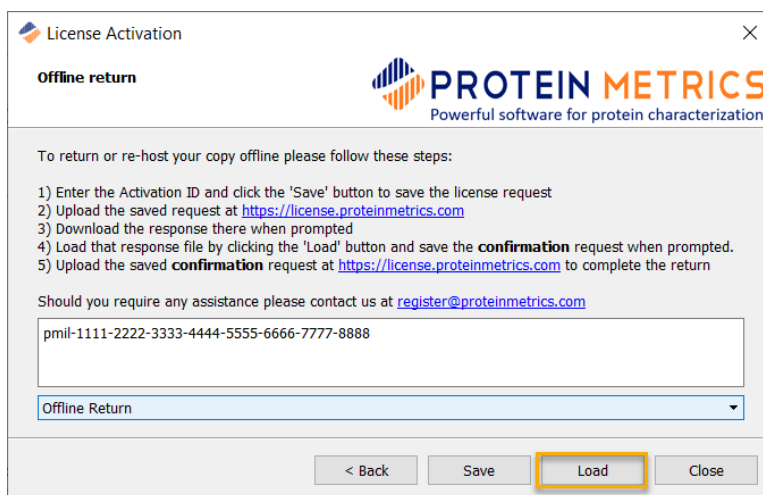
- On a second computer that is connected to the Internet, copy the saved rqf file. Go to the URL <https://license.proteinmetrics.com/>. Click **Choose File**, navigate to the copy of the saved rqf file on the second computer, and click **Open**. The rqf file is displayed in the web browser. Click **UPLOAD**.



6. If successful, a link to download the response file ( \*.rqr.bin ) is displayed. Click it to save the file locally.



7. Copy the saved response bin file to the offline computer where the PMI software license is being returned. To load the response file, return to the License Activation dialog and click **Load**:

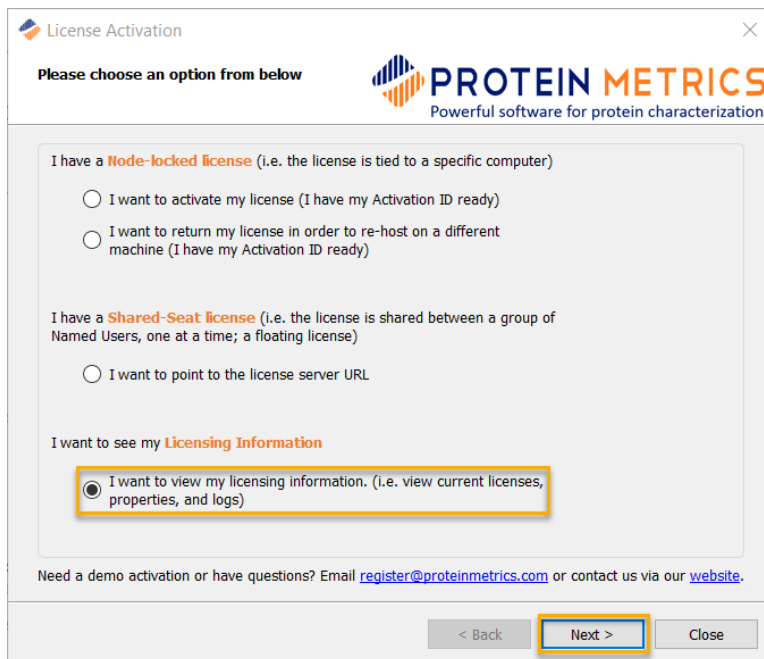


8. Navigate to the downloaded return file ( \*.rqr.bin ) and click **Open**. You will be prompted to save a **confirmation** request file ( \*.rqr ). Save this file.
9. On the second, online computer, copy the saved confirmation request file and go to <https://license.proteinmetrics.com>, as in step 5. Upload the confirmation request file.
10. The offline return process is now fully complete.

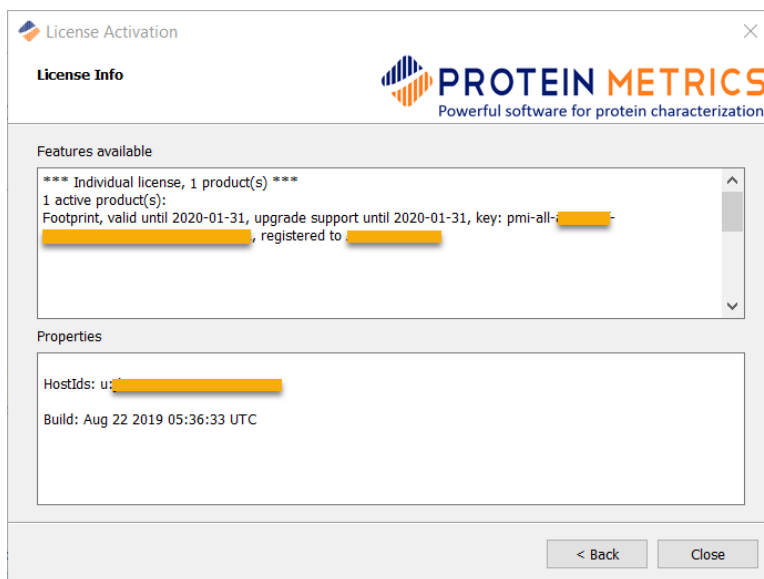
## View License Information

Many of the steps outlined above require use of the license activation ID. Additionally, license activation failures create error messages that can help trouble-shoot problems. To view the activation ID and other license information:

1. Click the **Help > Register** menu on the toolbar.
2. In the License Activation dialog, select **I want to view my license information**. Click **Next**.



3. Available products and their license activation key are displayed in the upper pane. System info is listed in the lower area.



## Move license to another machine (Rehost)

To move license from computer to another, please follow the procedures from the sections above:

- Return the license from the old machine
- Activate the license on the new machine

## Tips

### Follow offline request-response order

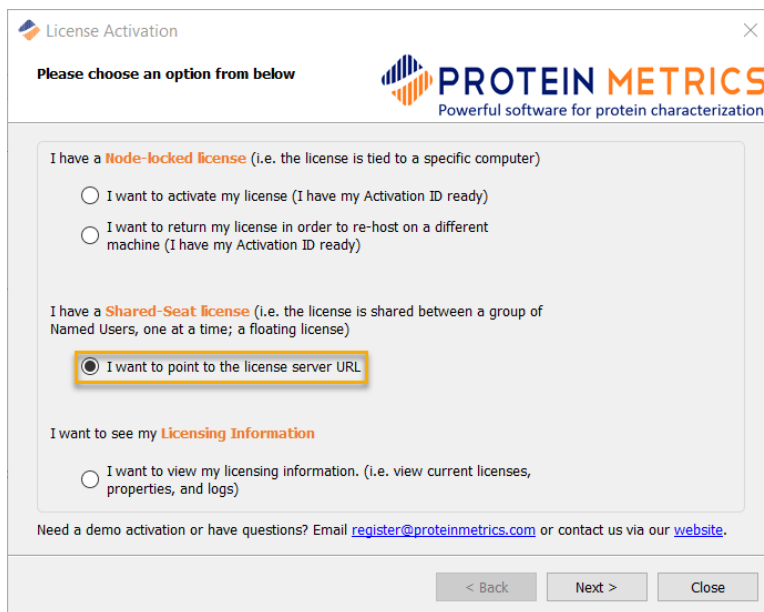
If you send us multiple offline requests, then either **load each response in chronological order** or **load the latest response** only. Each response contains all current licenses.

### Load offline response once

Do not load one offline response files multiple times, as this has no effect. If you would like to repeat the process, please start over with a new request.

### Do not edit the Shared-Seat license tab

If you have an individual or machine-based, node-locked license, please do not make any entries to the Shared-Seat license area. This can interfere with the use of the products.



License Activation

Please choose an option from below

**PROTEIN METRICS**  
Powerful software for protein characterization

I have a **Node-locked license** (i.e. the license is tied to a specific computer)

I want to activate my license (I have my Activation ID ready)

I want to return my license in order to re-host on a different machine (I have my Activation ID ready)

I have a **Shared-Seat license** (i.e. the license is shared between a group of Named Users, one at a time; a floating license)

I want to point to the license server URL

I want to see my **Licensing Information**

I want to view my licensing information. (i.e. view current licenses, properties, and logs)

Need a demo activation or have questions? Email [register@proteinmetrics.com](mailto:register@proteinmetrics.com) or contact us via our [website](#).

< Back    Next >    Close

To configure a shared-seat license, see **the PMI Local License Server Manual**.

## Contact Protein Metrics

For questions about license and registration, contact [support@proteinmetrics.com](mailto:support@proteinmetrics.com). For questions about Protein Metrics software, contact [support@proteinmetrics.com](mailto:support@proteinmetrics.com).

Up to date release and product information are listed on our website. Please visit: <https://www.proteinmetrics.com>.